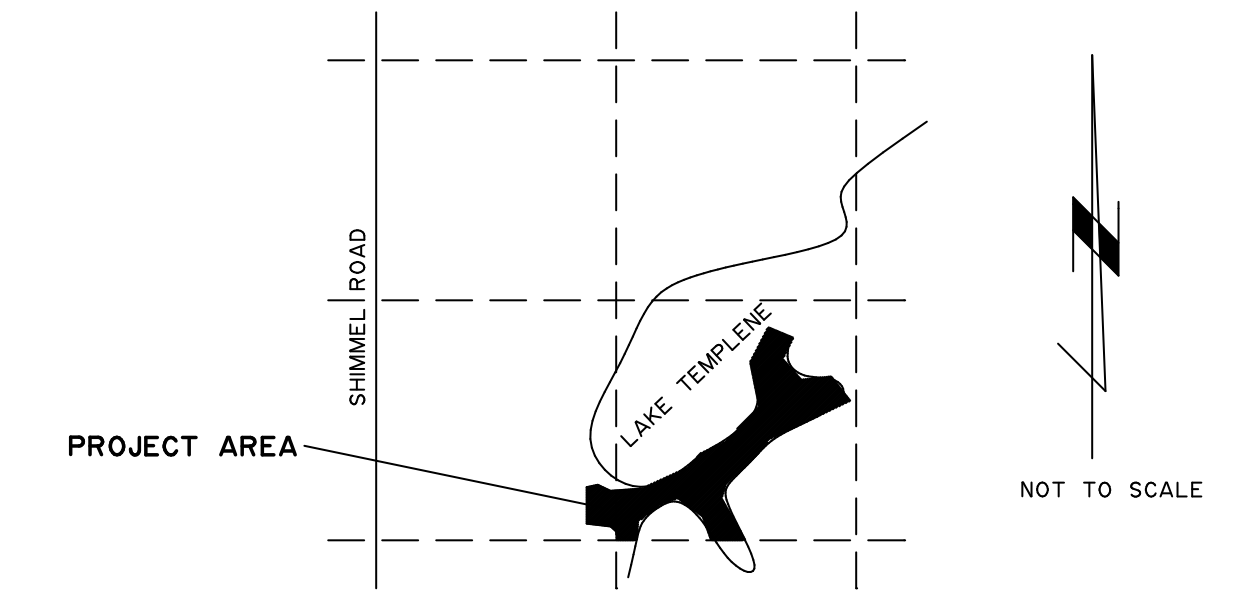
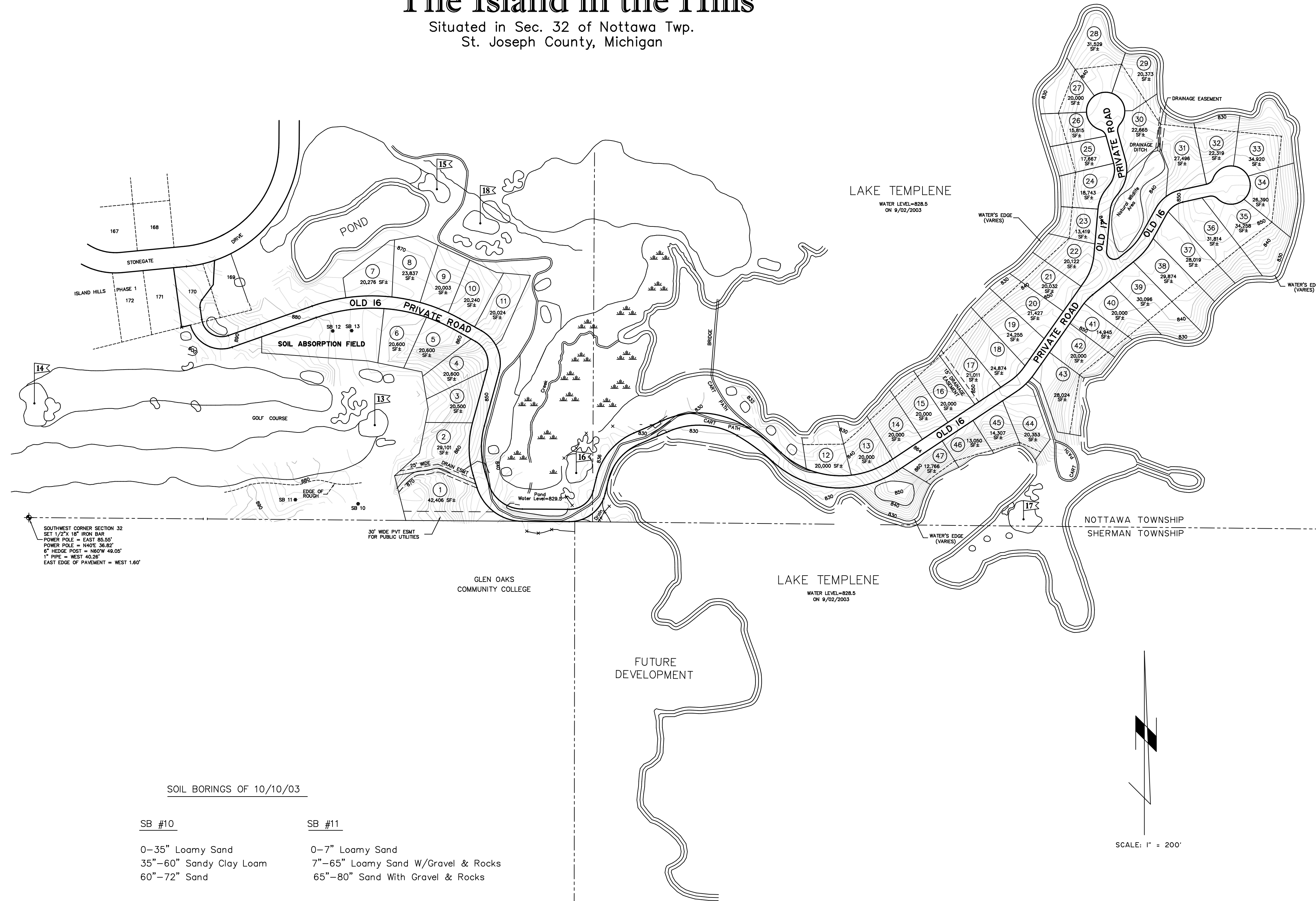


The Island in the Hills

Situated in Sec. 32 of Nottawa Twp.
St. Joseph County, Michigan



SOUTHWEST CORNER SECTION 32
SET 1/2" X 16" IRON BAR
POWER POLE = EAST 80.84'
POWER POLE = N40E 36.82'
6" WEDGE POST = N40E 18.00'
1" PIPE = WEST 40.26'
EAST EDGE OF PAVEMENT = WEST 1.80'

SOIL BORINGS OF 10/10/03

SB #10

0-35" Loamy Sand
35"-60" Sandy Clay Loam
60"-72" Sand

SB #12

0-2" Loamy Sand
2"-48" Sandy Clay Loam
48"-52" Silty Loam
52"-77" Sand

SB #11

0-7" Loamy Sand
7"-65" Loamy Sand W/Gravel & Rocks
65"-80" Sand With Gravel & Rocks

SB #13

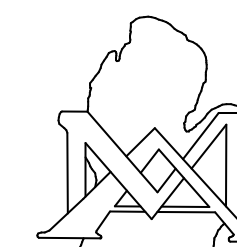
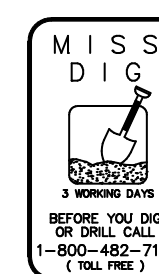
0-53" Loamy Sand
53"-75" Sand

SCALE: 1" = 200'

OWNER/DEVELOPER:

ISLAND HILLS L.L.C.
THOMAS & LORI TEMPLIN
24624 BUTTERNUT CT.
STURGIS, MI 49091

BASE DRAWING, BOUNDARY AND TOPOGRAPHIC SURVEY PROVIDED BY:



MOSTROM & ASSOC., INC.

610 W. Burr Oak St. (Hwy. M-86)
Centreville, Michigan 49032
Phone: (269)467-6348 Fax: (269)467-7083

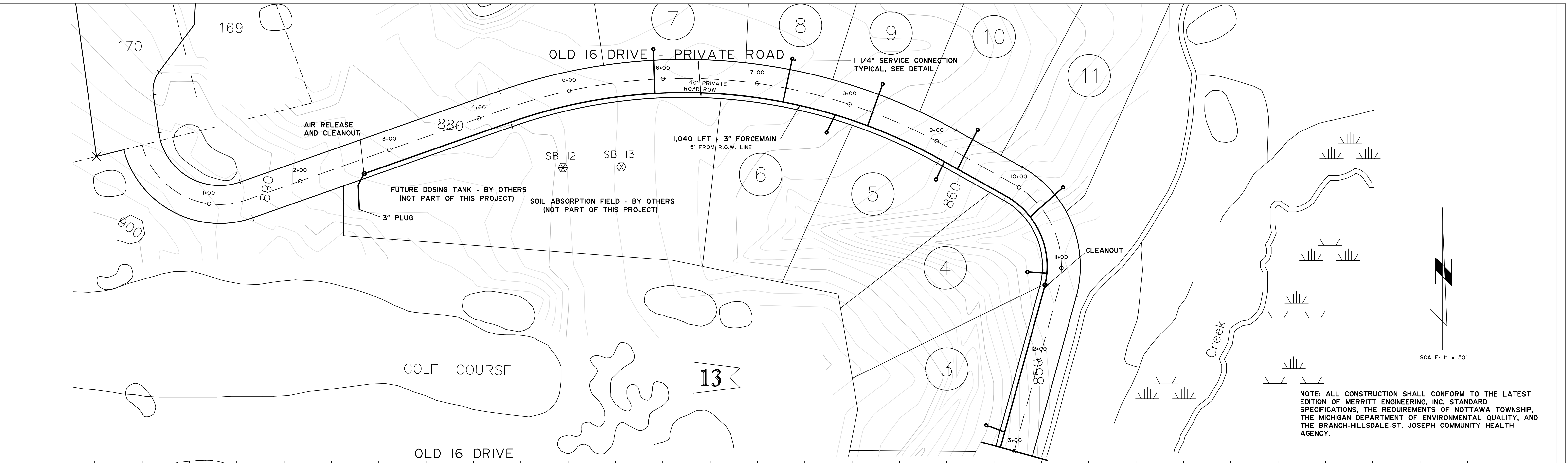
THE ISLAND IN THE HILLS

PRESSURE SEWER SYSTEM

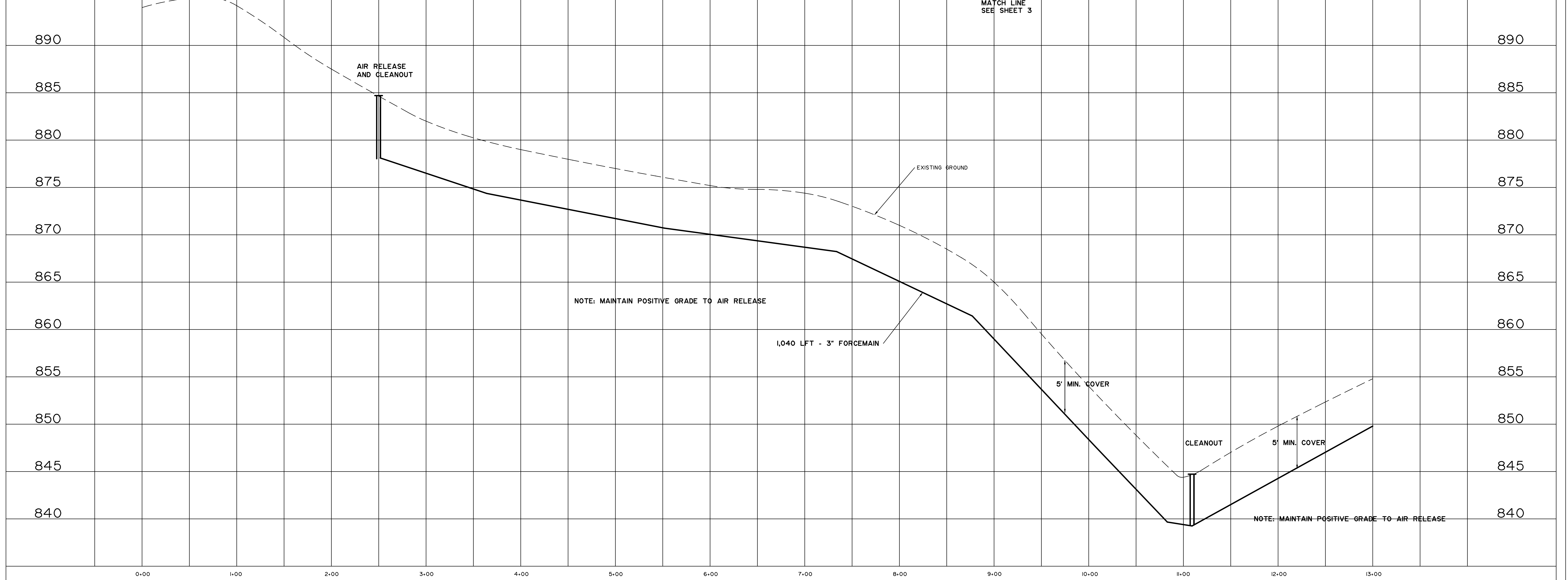
MERRITT ENGINEERING, INC.

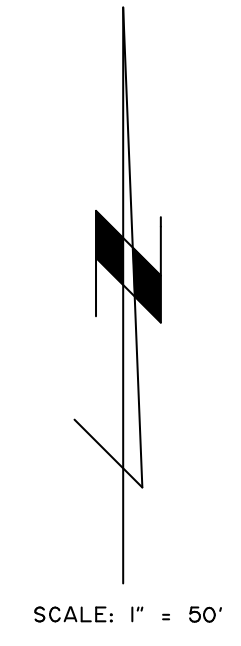
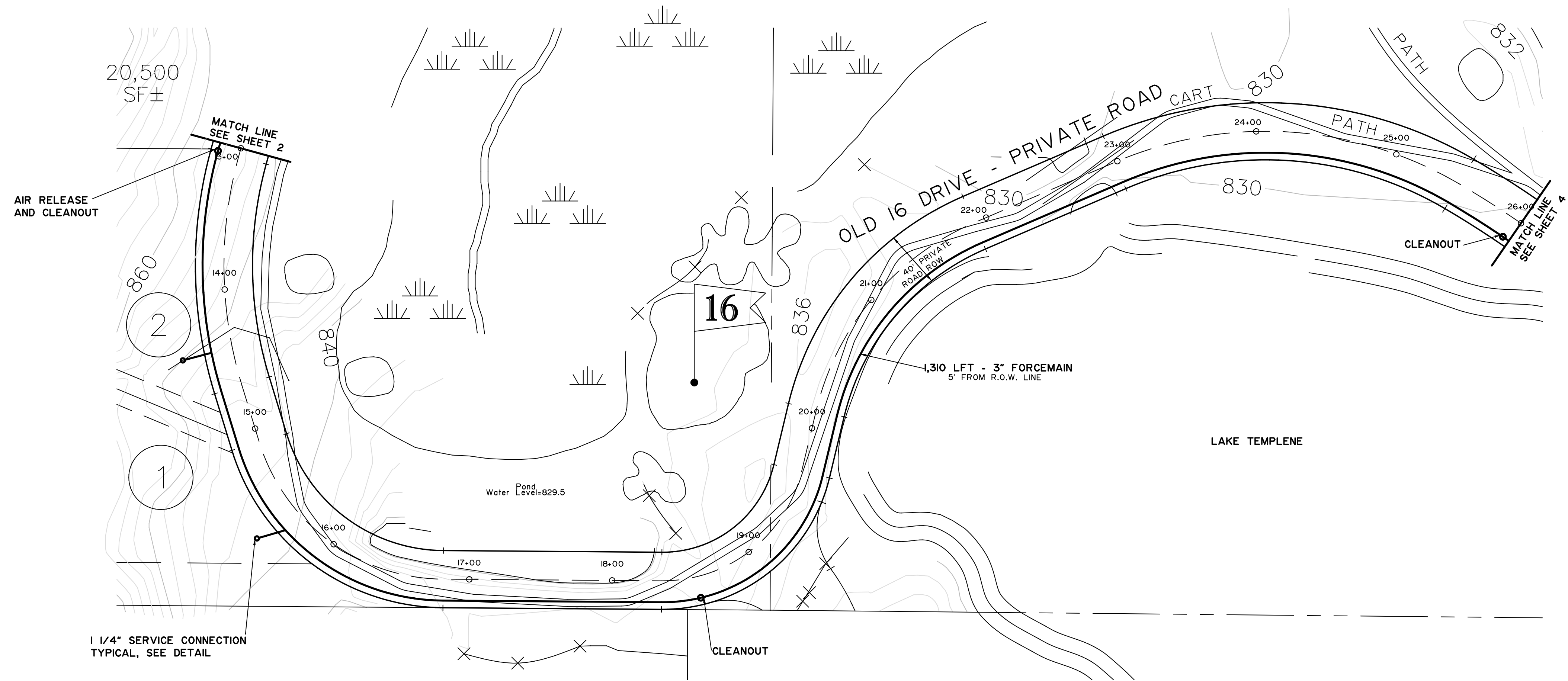
4568 Red Arrow Highway, Stevensville, Michigan 49127 269/428-4424

Scale	Date	Drawn By	Project No.	Sheet Number
1" = 200'	4-6-04	RCA	20369	1 of 6



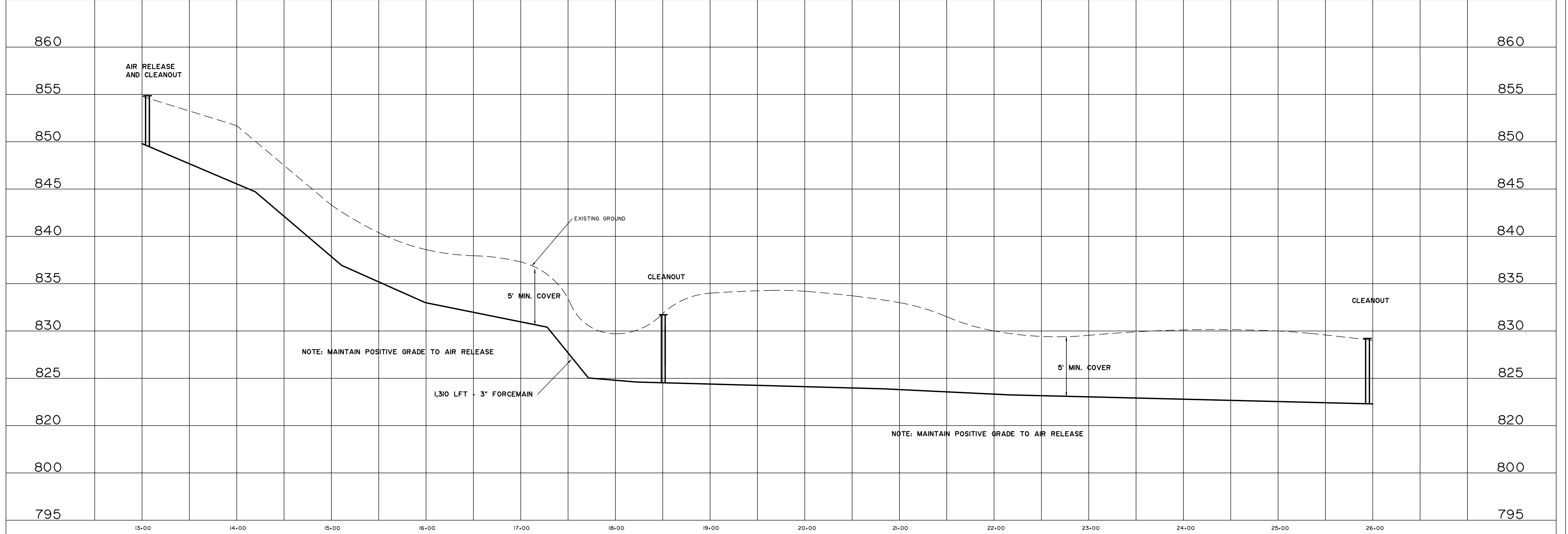
NOTE: ALL CONSTRUCTION SHALL CONFORM TO THE LATEST EDITION OF MERRITT ENGINEERING, INC. STANDARD SPECIFICATIONS, THE REQUIREMENTS OF NOTTAWA TOWNSHIP, THE MICHIGAN DEPARTMENT OF ENVIRONMENTAL QUALITY, AND THE BRANCH-HILLSDALE-ST. JOSEPH COMMUNITY HEALTH AGENCY.

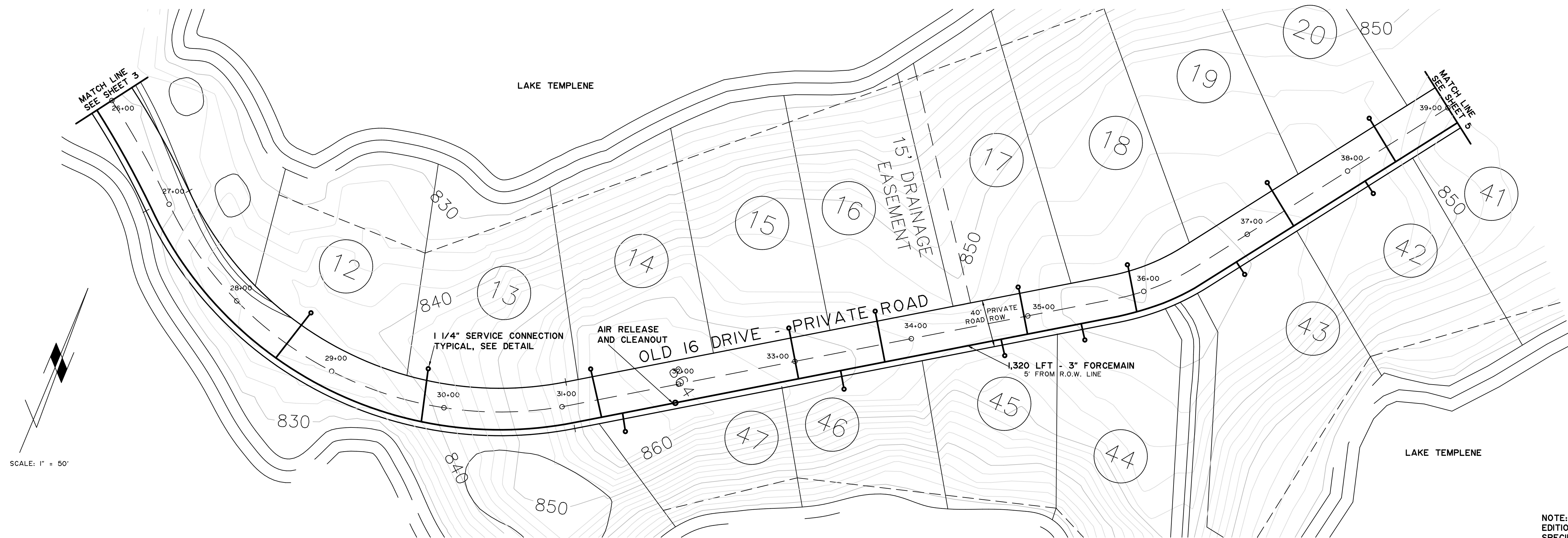




NOTE: ALL CONSTRUCTION SHALL CONFORM TO THE LATEST EDITION OF MERRITT ENGINEERING, INC. STANDARD SPECIFICATIONS, THE REQUIREMENTS OF NOTTAWA TOWNSHIP, THE MICHIGAN DEPARTMENT OF ENVIRONMENTAL QUALITY, AND THE BRANCH-HILLSDALE-ST. JOSEPH COMMUNITY HEALTH AGENCY.

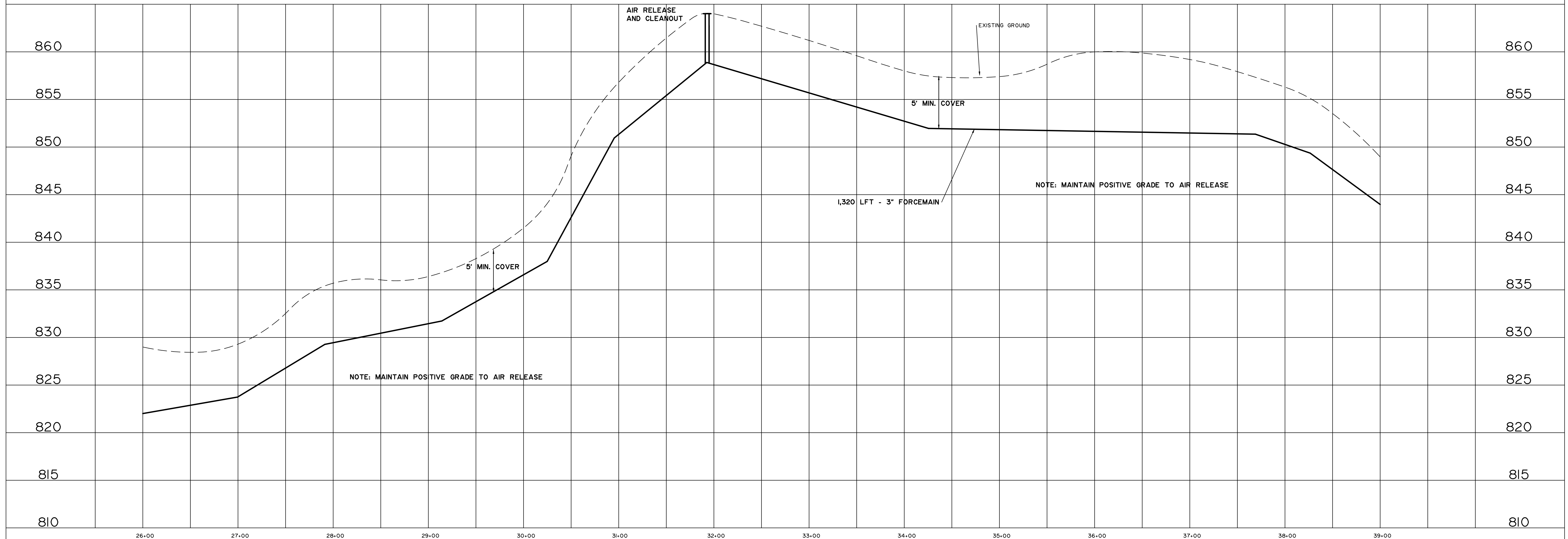
OLD 16 DRIVE

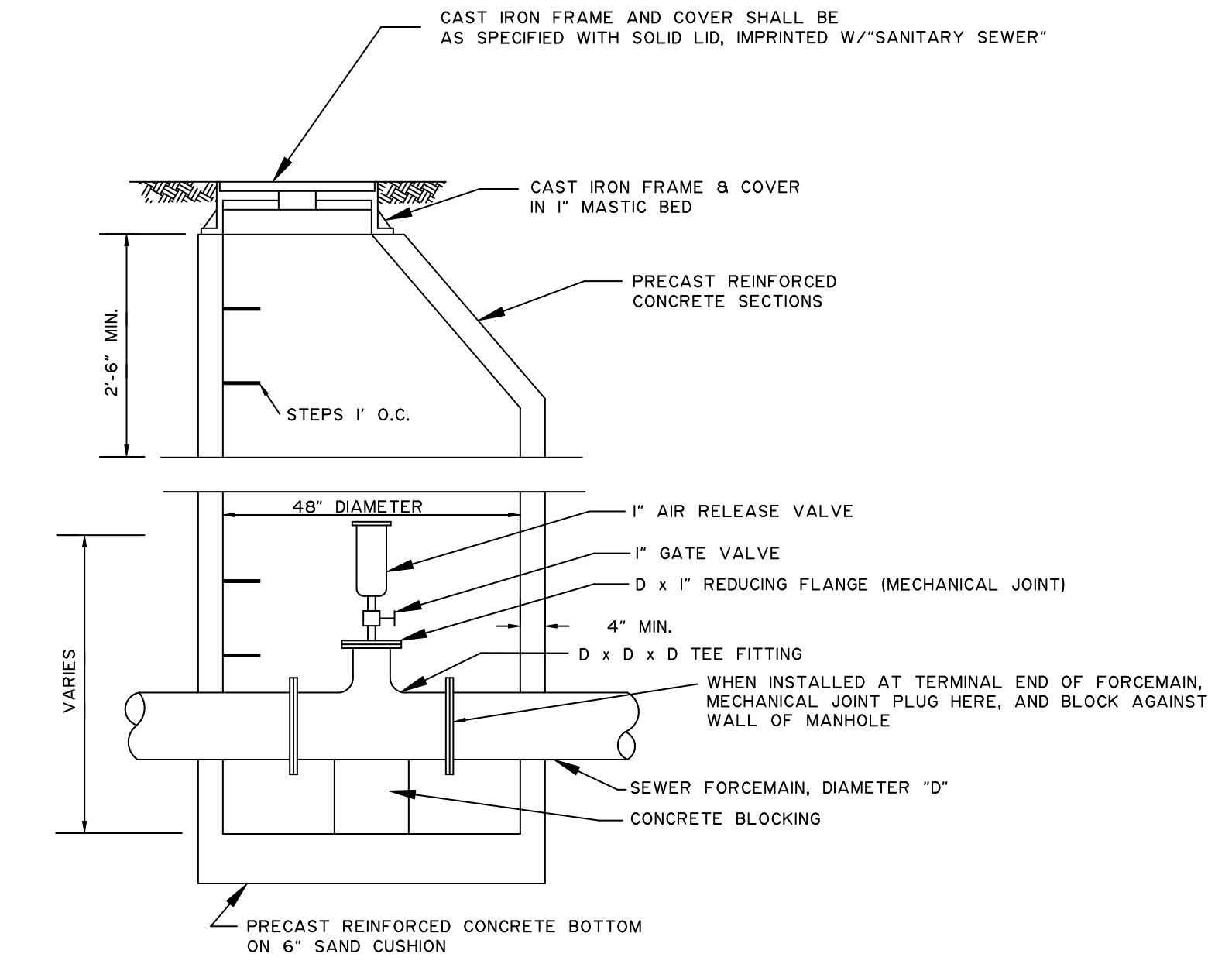
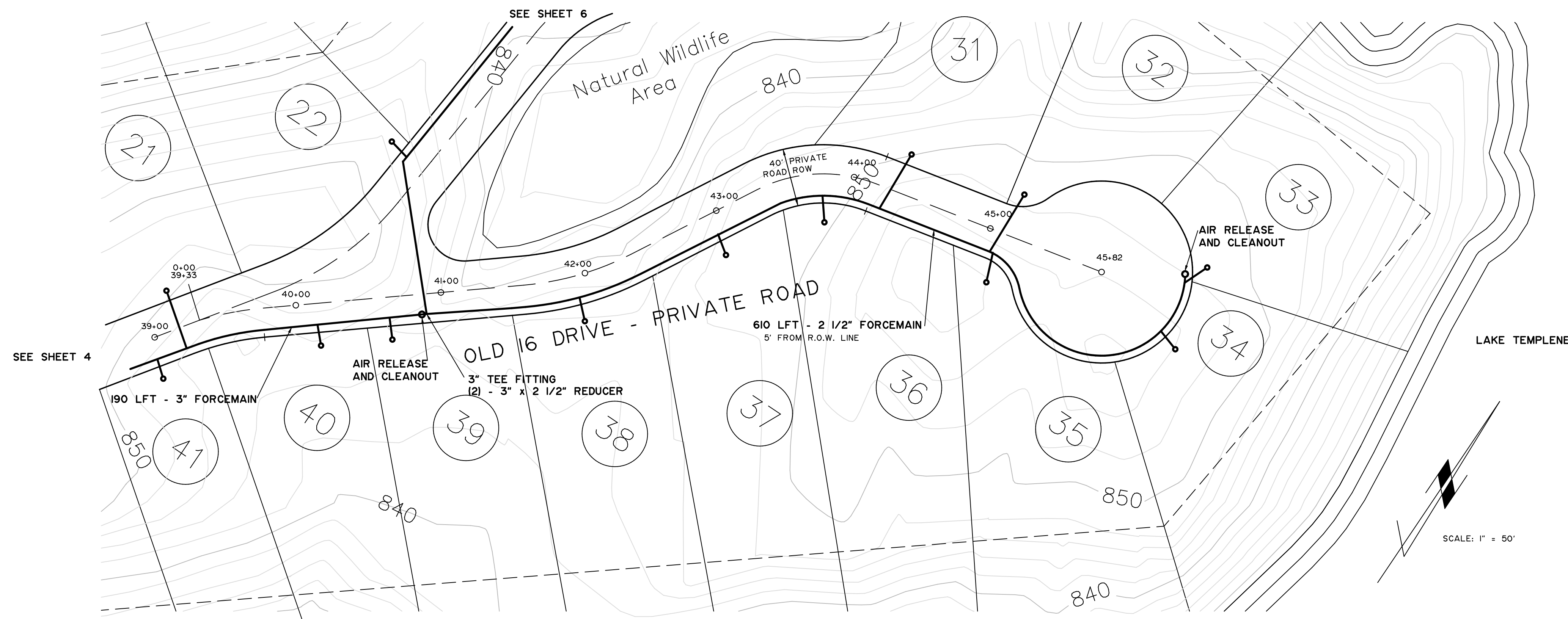




NOTE: ALL CONSTRUCTION SHALL CONFORM TO THE LATEST EDITION OF MERRITT ENGINEERING, INC. STANDARD SPECIFICATIONS, THE REQUIREMENTS OF NOTTAWA TOWNSHIP, THE MICHIGAN DEPARTMENT OF ENVIRONMENTAL QUALITY, AND THE BRANCH-HILLSDALE-ST. JOSEPH COMMUNITY HEALTH AGENCY.

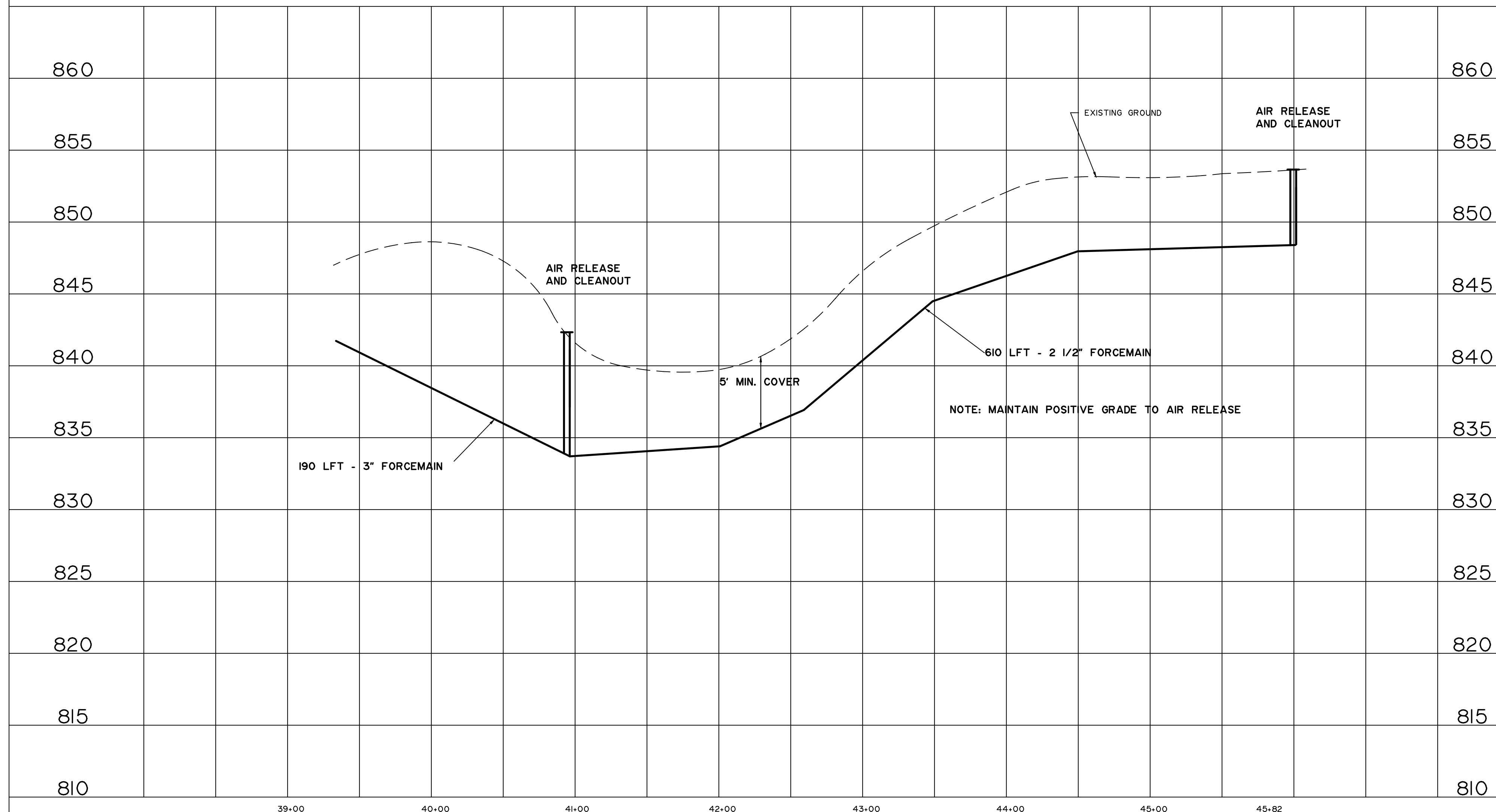
OLD 16 DRIVE



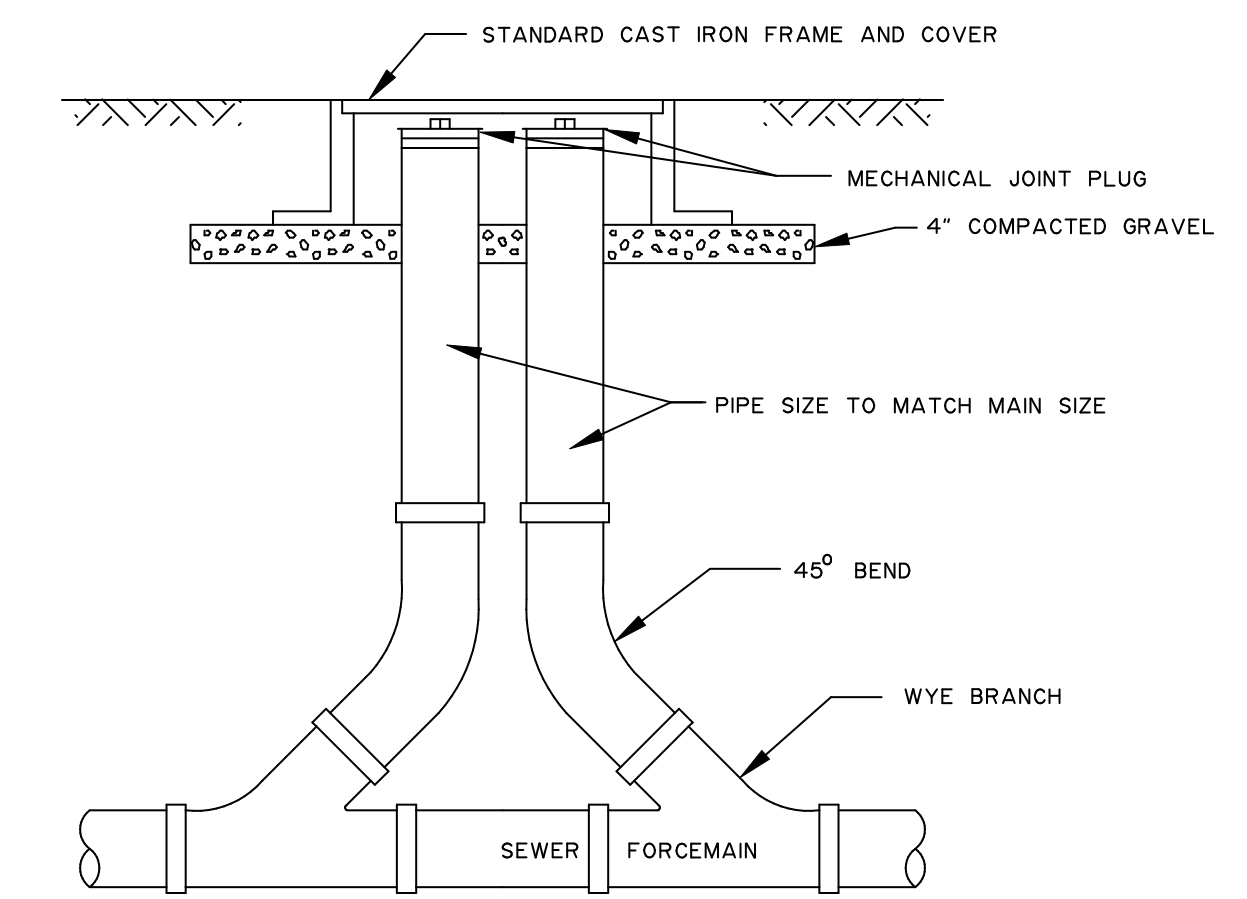


NOTE: ALL CONSTRUCTION SHALL CONFORM TO THE LATEST EDITION OF MERRITT ENGINEERING, INC. STANDARD SPECIFICATIONS, THE REQUIREMENTS OF NOTTAWA TOWNSHIP, THE MICHIGAN DEPARTMENT OF ENVIRONMENTAL QUALITY, AND THE BRANCH-HILLSDALE-ST. JOSEPH COMMUNITY HEALTH AGENCY.

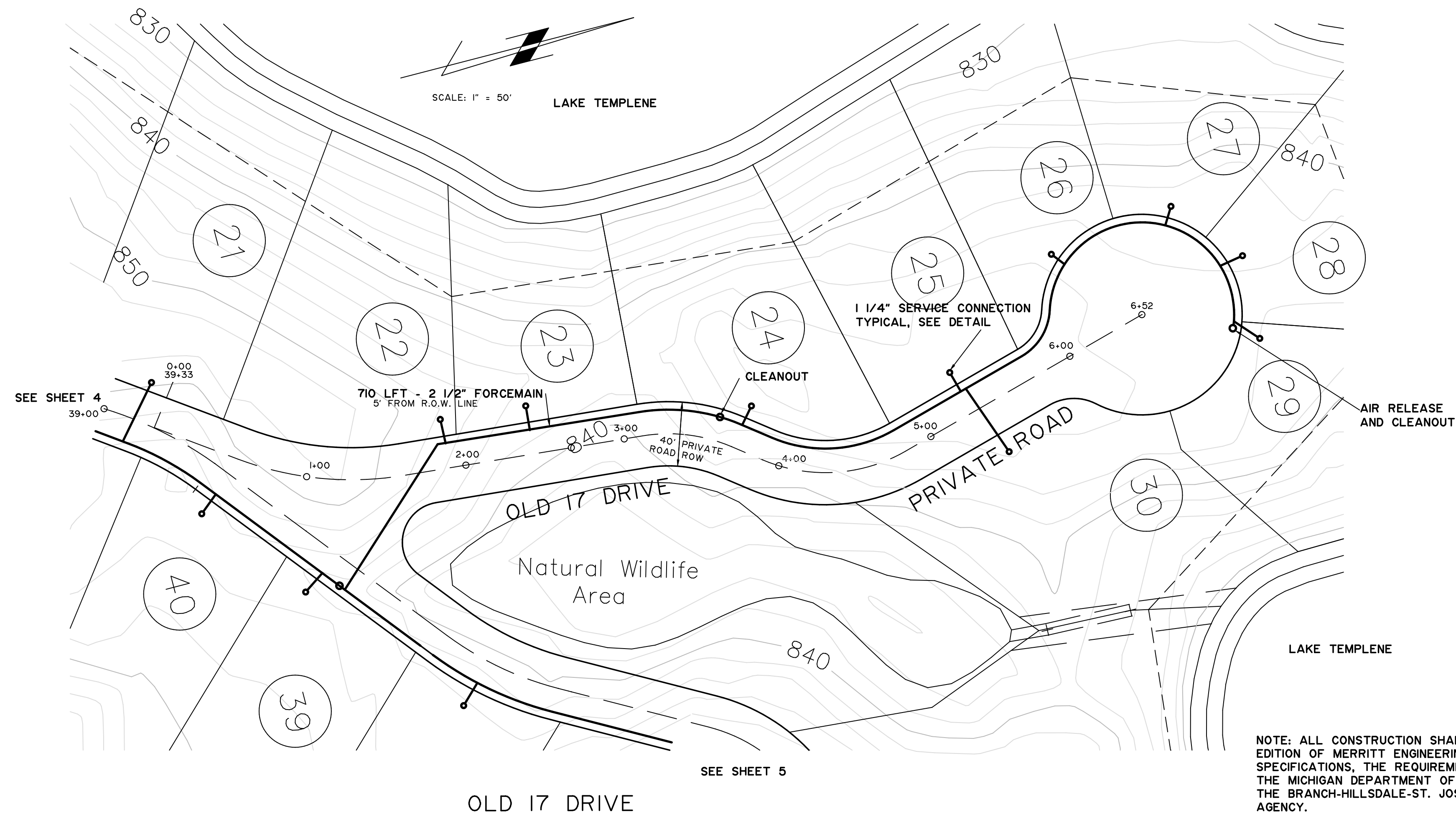
OLD 16 DRIVE



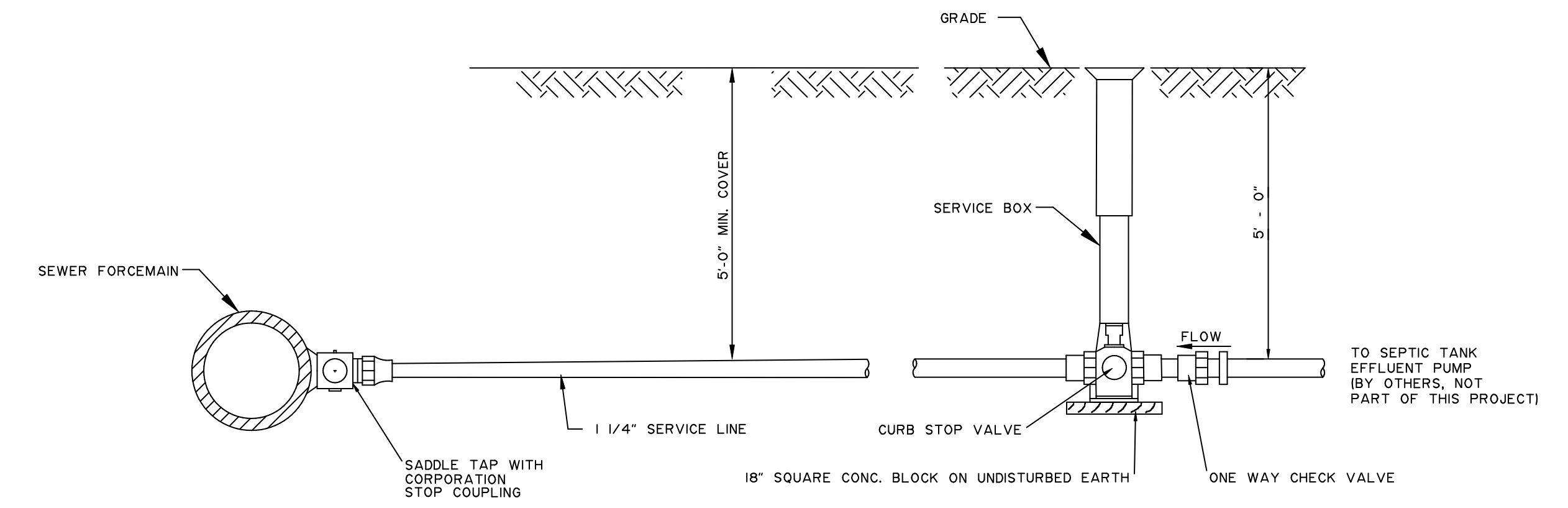
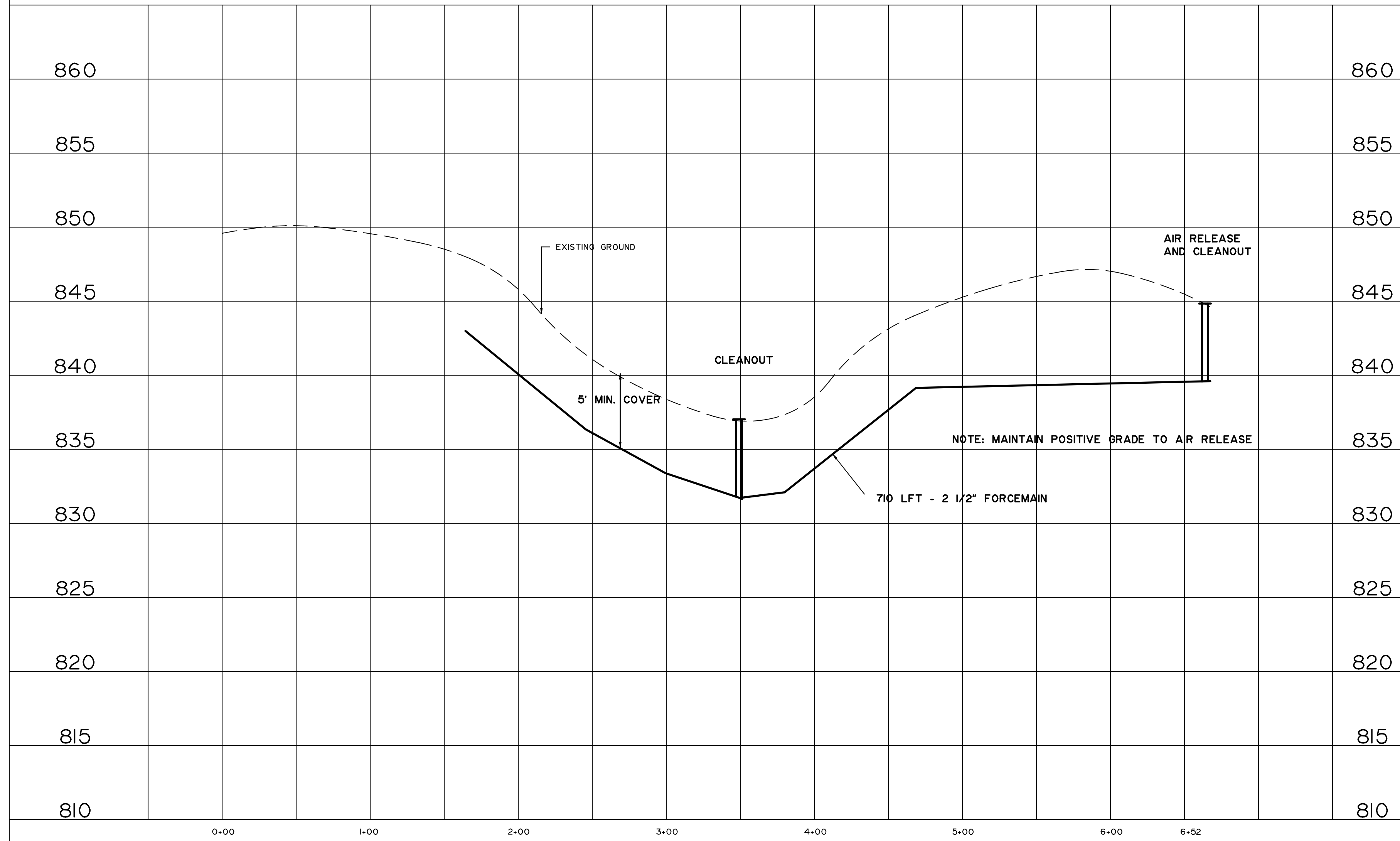
FORCEMAIN AIR RELEASE AND CLEANOUT



FORCEMAIN CLEANOUT



NOTE: ALL CONSTRUCTION SHALL CONFORM TO THE LATEST EDITION OF MERRITT ENGINEERING, INC. STANDARD SPECIFICATIONS, THE REQUIREMENTS OF NOTTAWA TOWNSHIP, THE MICHIGAN DEPARTMENT OF ENVIRONMENTAL QUALITY, AND THE BRANCH-HILLSDALE-ST. JOSEPH COMMUNITY HEALTH AGENCY.



SERVICE CONNECTION