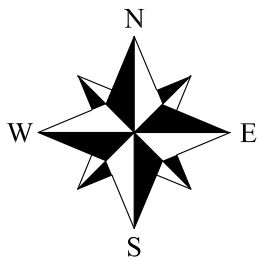
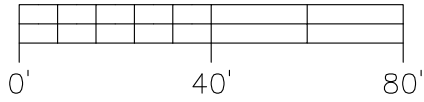


# PLAT OF SURVEY

RE: ADAM EIDSON  
SECTION 32, NOTTAWA TWP.  
ST. JOSEPH COUNTY, MI

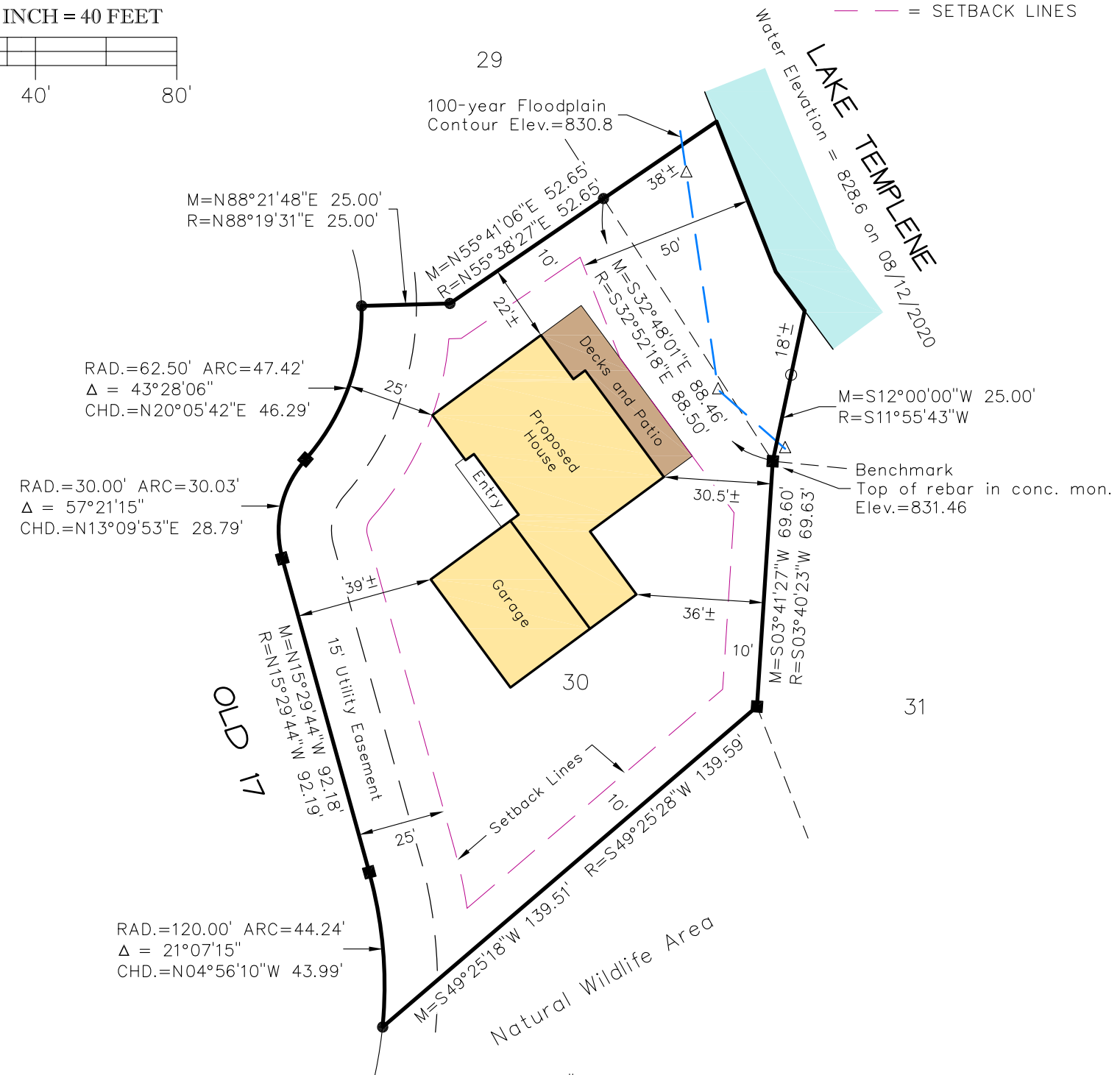


SCALE: 1 INCH = 40 FEET



**LEGEND**

- = MAG NAIL SET
- = MAG OR P.K. NAIL FOUND
- = CAPPED REBAR SET
- = REBAR FOUND
- △ = STAKE ON LINE
- = CONC. MONUMENT FOUND
- R = RECORDED DIMENSION
- M = MEASURED DIMENSION
- = SETBACK LINES



"The Island in the Hills St. Joseph County Condominium Subdivision Plan No. 24"

**SURVEYOR'S NOTES:**

1. All elevations are based on NAVD88.
2. Underground utilities, other than those shown, may exist. All contractors must call "MISS DIG" at 811 at least 3 days prior to excavation.

**DESCRIPTION FURNISHED:**

TOWNSHIP OF NOTTAWA, COUNTY OF ST. JOSEPH, STATE OF MICHIGAN

UNIT 30, ISLAND IN THE HILLS, A CONDOMINIUM ACCORDING TO THE MASTER DEED RECORDED IN LIBER 1267 ON PAGE 337, AND AMENDMENTS THERETO, AND DESIGNATED AS ST. JOSEPH COUNTY CONDOMINIUM SUBDIVISION NO. 24, TOGETHER WITH THE RIGHTS IN GENERAL COMMON ELEMENTS AND LIMITED COMMON ELEMENTS AS SET FORTH IN SAID MASTER DEED AND AS DESCRIBED IN ACT 59 OF PUBLIC ACTS OF 1978, AS AMENDED.

RE: NATIONS TITLE AGENCY OF MICHIGAN, INC.; #20MI02676

**SURVEYOR'S CERTIFICATE:**

I hereby certify exclusively to ADAM EIDSON that I have surveyed the above described property; that the plat hereon delineated is a correct representation of the same; that all surface encroachments were noted; that said survey was performed with an error closure of one in 5000+.



DAVID W. MOSTROM, Professional Surveyor No. 32339  
610 W. Burr Oak St., Centreville, MI 49032 (269) 467-6348  
28 W. Chicago St., Coldwater, MI 49036 (517) 279-9707

NOTE: COPYRIGHT©MOSTROM & ASSOC., INC. All rights reserved. No part of this map may be reproduced by photocopying, recording or by any other means, or stored, processed or transmitted in or by any computer or other systems without the prior written permission of the surveyor. Copies of this plan without an original signature and seal are not valid.