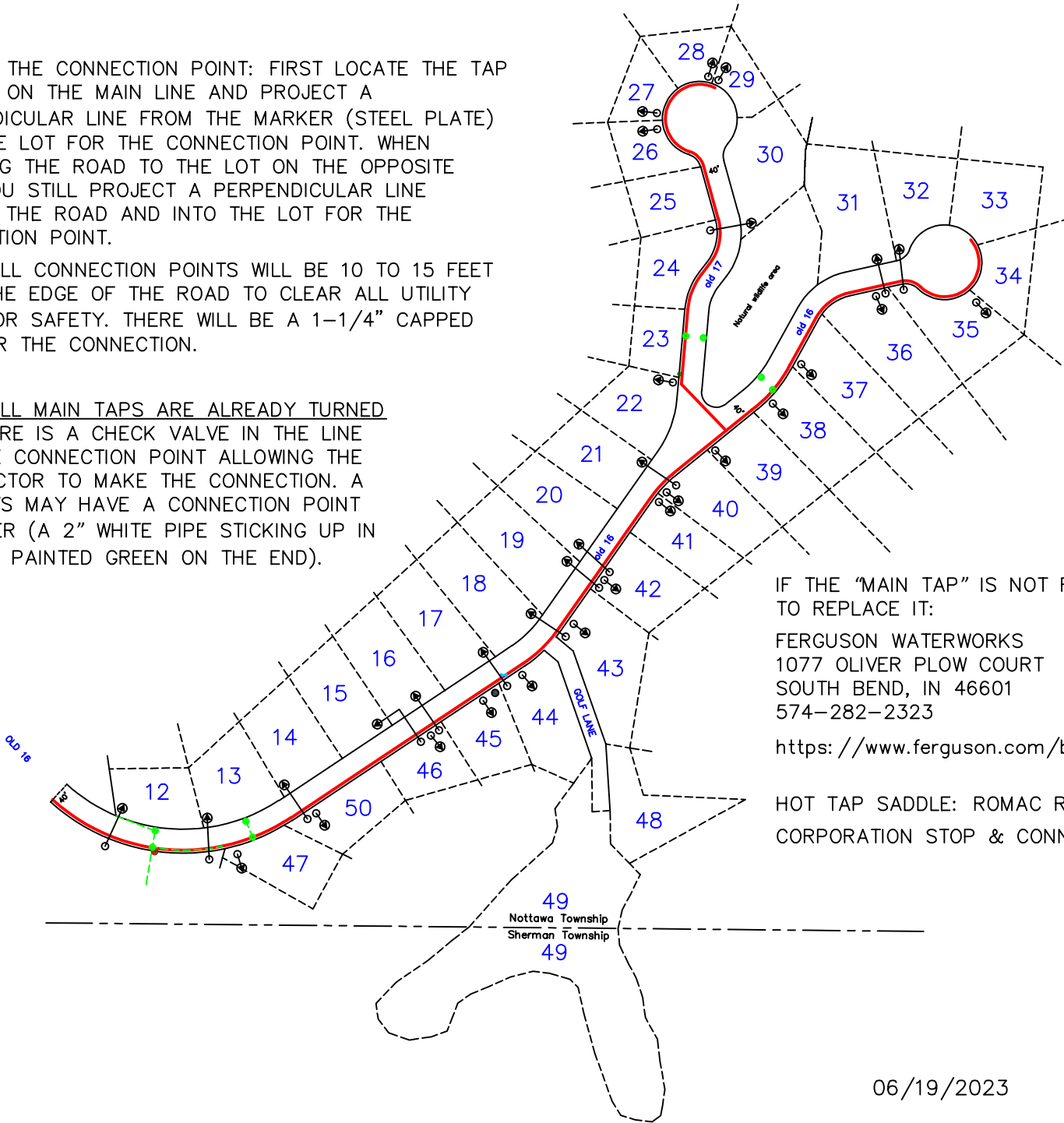


TO FIND THE CONNECTION POINT: FIRST LOCATE THE TAP MARKER ON THE MAIN LINE AND PROJECT A PERPENDICULAR LINE FROM THE MARKER (STEEL PLATE) INTO THE LOT FOR THE CONNECTION POINT. WHEN CROSSING THE ROAD TO THE LOT ON THE OPPOSITE SIDE, YOU STILL PROJECT A PERPENDICULAR LINE ACROSS THE ROAD AND INTO THE LOT FOR THE CONNECTION POINT.

NOTE: ALL CONNECTION POINTS WILL BE 10 TO 15 FEET FROM THE EDGE OF THE ROAD TO CLEAR ALL UTILITY LINES FOR SAFETY. THERE WILL BE A 1-1/4" CAPPED PIPE FOR THE CONNECTION.

NOTE: ALL MAIN TAPS ARE ALREADY TURNED ON! THERE IS A CHECK VALVE IN THE LINE FOR THE CONNECTION POINT ALLOWING THE CONTRACTOR TO MAKE THE CONNECTION. A FEW LOTS MAY HAVE A CONNECTION POINT IDENTIFIER (A 2" WHITE PIPE STICKING UP IN THE LOT PAINTED GREEN ON THE END).



LEGEND	
	CONNECTION POINT FOR SEWER HOOK-UP
	TAP INTO MAIN SEWER LINE
	SPARE TAP
	MAIN SEWER LINE

IF THE "MAIN TAP" IS NOT FUNCTIONING, HERE IS THE INFORMATION TO REPLACE IT:

FERGUSON WATERWORKS
 1077 OLIVER PLOW COURT
 SOUTH BEND, IN 46601
 574-282-2323

<https://www.ferguson.com/branch/south-bend-in-waterworks>

HOT TAP SADDLE: ROMAC R202S035051
 CORPORATION STOP & CONNECTION: FORD METER BOX FB1600-5-NL